



**Online & home tutors** Registered business name: mathline ABN: 35 631 817 853

# ***PHYSICS***

## ***2008***

### ***Trial Examination 1***

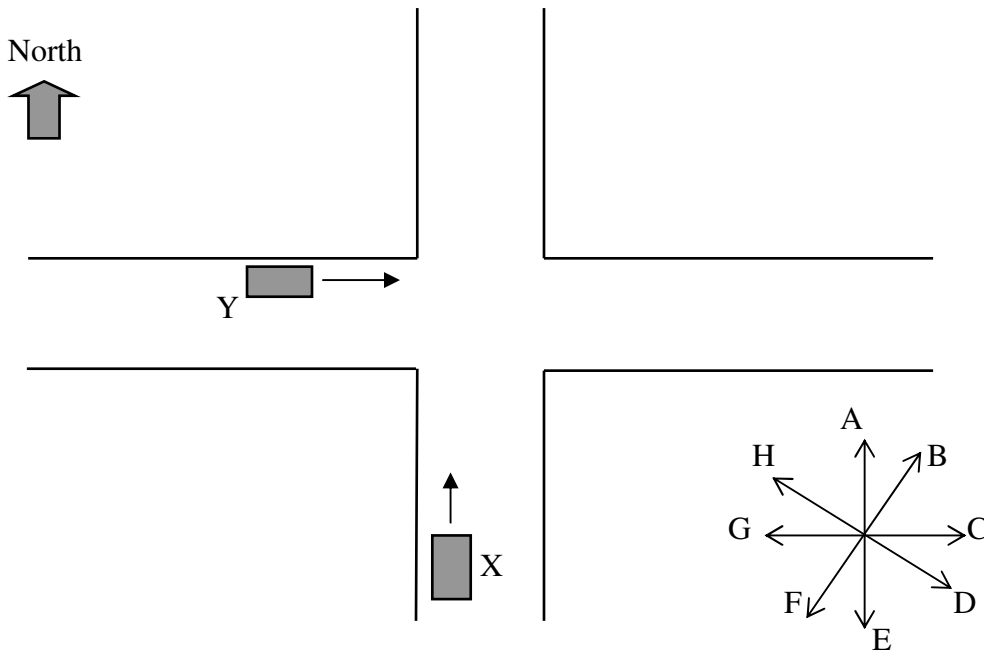
***Motion in one and two dimensions***

***Electronics and photonics***

***Investigating materials and their use in structures***

(Note: Use information in the formula data sheet supplied by VCAA)

**Area of study 1 – Motion in one and two dimensions**



Car X travelling to the north and car Y travelling to the east cross the intersection safely at constant speeds. Tom is a passenger in car X.

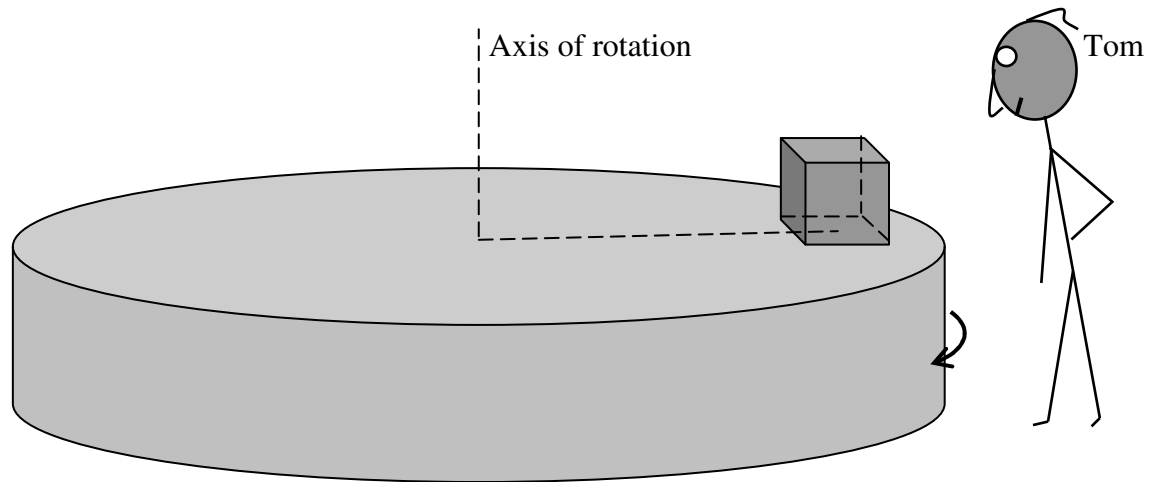
**Question 1** Which one of the arrows (A – H) is the best indication of the direction of motion of car Y observed by Tom in car X at the moment shown in the above diagram? 2 marks

**Question 2** The speeds of car X and car Y are  $35 \text{ kmh}^{-1}$  and  $42 \text{ kmh}^{-1}$  respectively. Find the speed of car Y relative to car X.

2 marks

**Question 3** Which one of the arrows (A – H) is the best indication of the direction of motion of car Y observed by Tom in car X after both cars have crossed the intersection? 2 marks

A 12-kg parcel is placed on a horizontal rotating platform 2.5 m from the axis of rotation. The coefficient of friction between the parcel and platform surface is 0.20. The platform rotates with **increasing** speed and the parcel is at rest relative to the platform.



**Question 4** On the above diagram draw an arrow to show the direction of the net force on the parcel. 2 marks

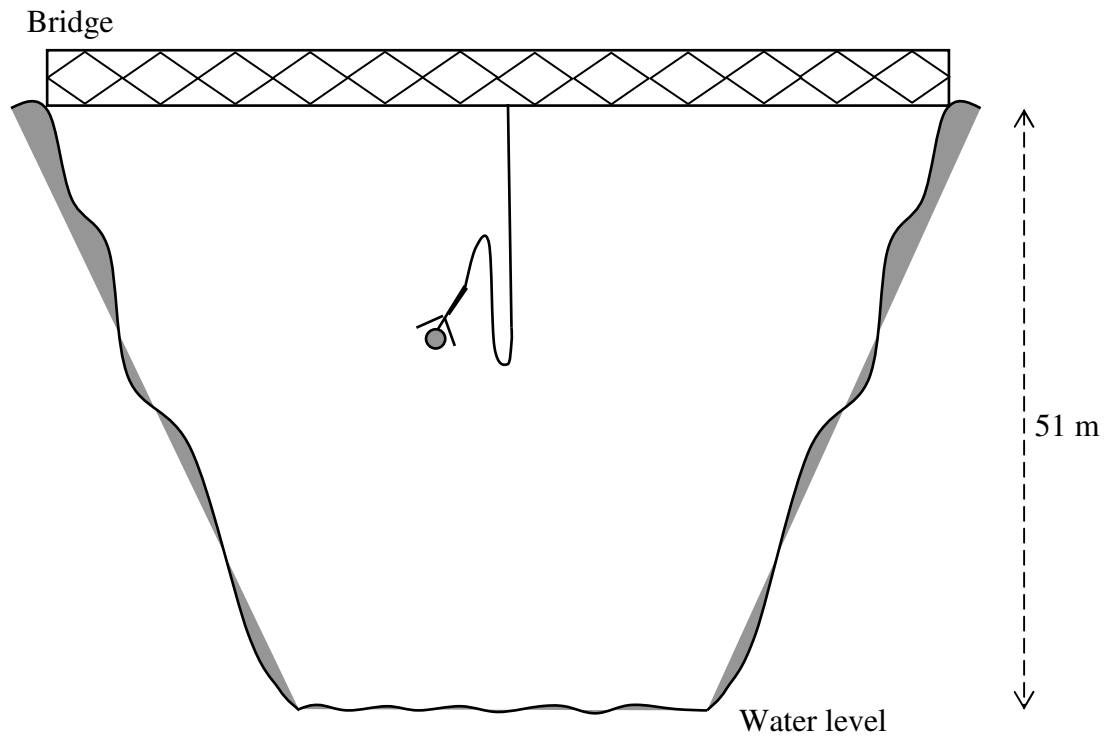
**Question 5** The rotating platform is a **non-inertial frame of reference**. Briefly explain the meaning of the statement. 2 marks

Now the speed of rotation of the platform is kept constant.

**Question 6** Find the maximum speed of the parcel (observed by Tom) that allows it to rotate with the platform without sliding. 3 marks

$\text{ms}^{-2}$

Tom (72.0 kg) attempts a bungee jump. The jumping point is 51 m above the water. The bungee cord is 34 m long and it is elastic (i.e. it follows Hooke's law) up to an extension of 20 m. Air resistance is to be ignored. Consider Tom as a point mass starting **from rest**.



**Question 7** Calculate the time that Tom is in free fall.

2 marks

**Question 8** Determine the maximum force constant (spring constant) of the bungee cord, which allows Tom to reach the water level.

3 marks

**Question 9** The acceleration of Tom is zero at some distance **below the bridge**. Calculate that distance.

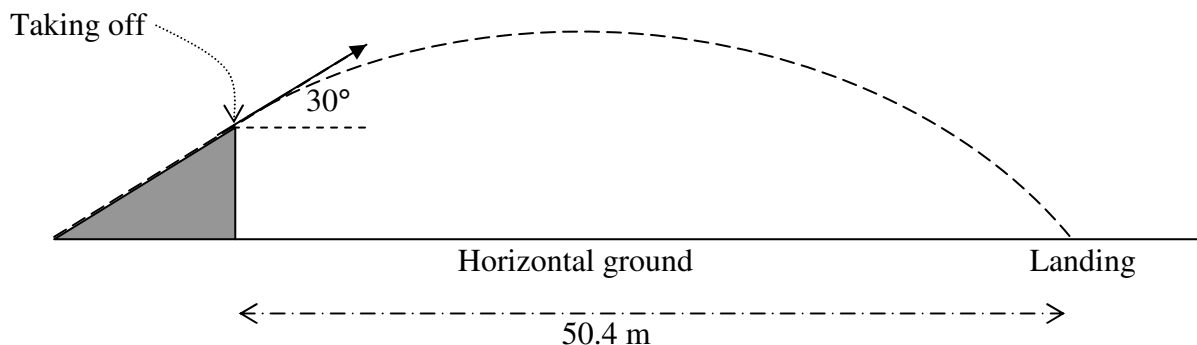
3 marks

**Question 10** Tom Junior (71.8 kg) has slightly less mass. He attempts the bungee jump using the same type and length of bungee cord. He needs to leap off the bridge vertically at speed  $V \text{ ms}^{-1}$  in order for him to reach the water level. Calculate the value of  $V$ . Consider Tom Junior as a point mass.

3 marks

$\text{ms}^{-1}$

Tom rides a motorbike up a ramp. The total mass of Tom and the motorbike is 252 kg. The ramp makes a  $30^\circ$  angle with the horizontal ground. Tom clears a horizontal distance of 50.4 metres in 2.64 seconds after taking off from the ramp. Consider Tom and the motorbike as a point mass. Air resistance is to be ignored.



**Question 11** Find the speed of Tom at the highest point.

2 marks

$\text{ms}^{-1}$

**Question 12** Find the magnitude of the acceleration of Tom at the highest point.

2 marks

$\text{ms}^{-2}$

**Question 13** Find the change in momentum (magnitude and direction) of Tom and the motorbike from the moment of taking off to the moment just before landing.

3 marks

$\text{ms}^{-1}$	
------------------	--

**Question 14** Briefly explain how the law of conservation of momentum can be applied to Tom and the motorbike moving through the air **during** the stunt.

2 marks

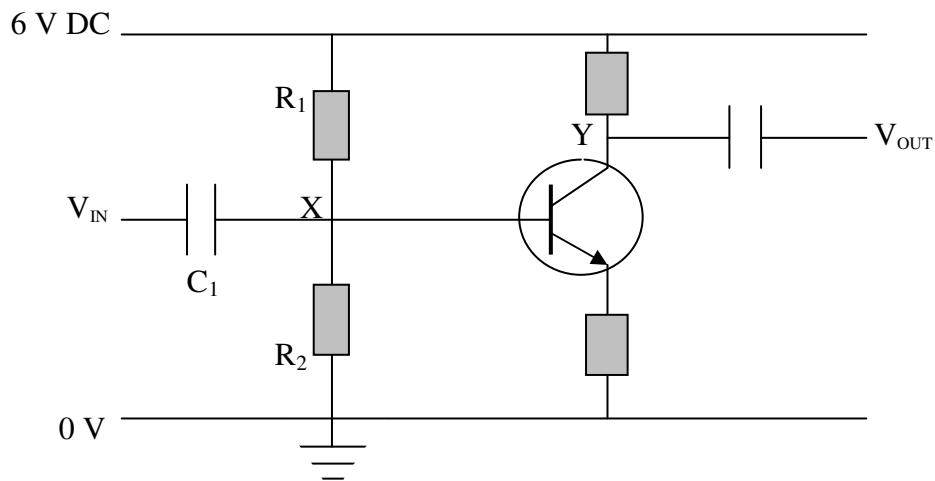
**Question 15** Find the height of the ramp.

3 marks

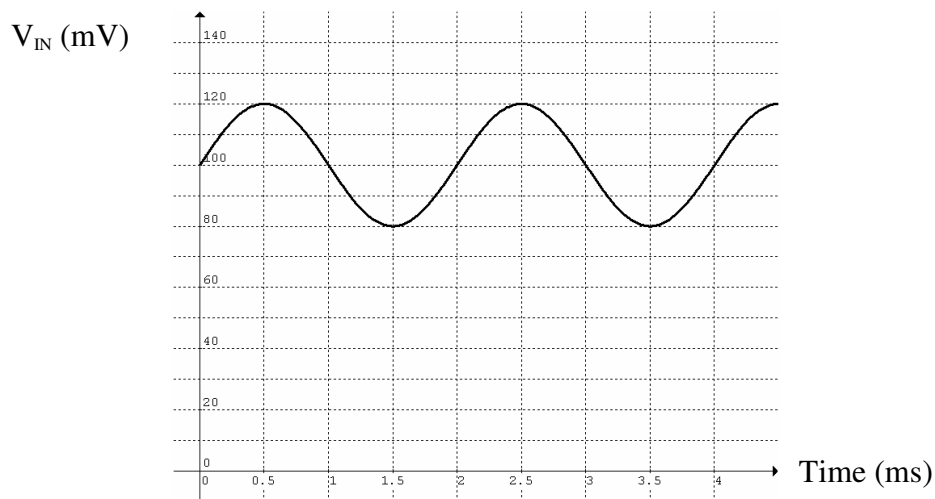
m
---

## Area of study 2 – Electronics and photonics

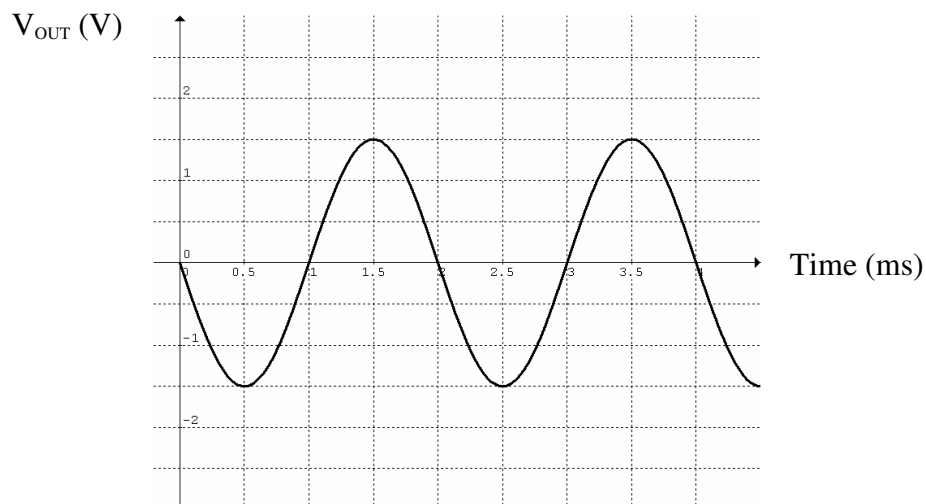
The circuit diagram for an npn transistor amplifier is shown in the following diagram. The **current gain** of the transistor is 100.



**With no input signal**, the voltage (potential) at point X is 1.0 V, and at point Y it is 3.0 V. Now the signal shown below is applied at  $V_{IN}$ .



The output signal at  $V_{OUT}$  is shown below.



**Question 1** What is the **signed** voltage gain of the amplifier?

2 marks

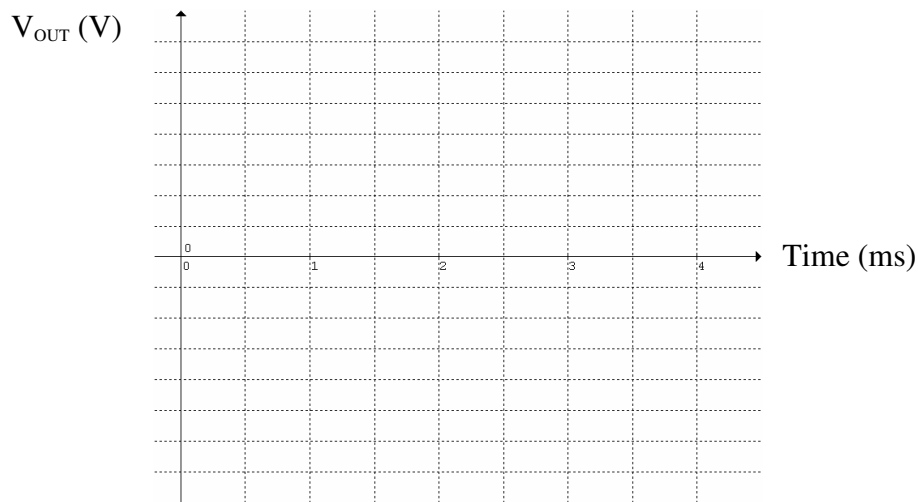
**Question 2** What is the collector current when the base current is  $8.0 \mu\text{A}$ ?

2 marks

Capacitor  $C_1$  is damaged accidentally, so the original signal is now applied at point X directly.

**Question 3** On the set of axes shown below sketch the output signal you would see.

2 marks



**Question 4** Which one of the following terms is best to explain your answer to **question 3**?

2 marks

- A. Clipping    B. Saturation    C. Cut-off    D. Linear gain    E. De-coupling

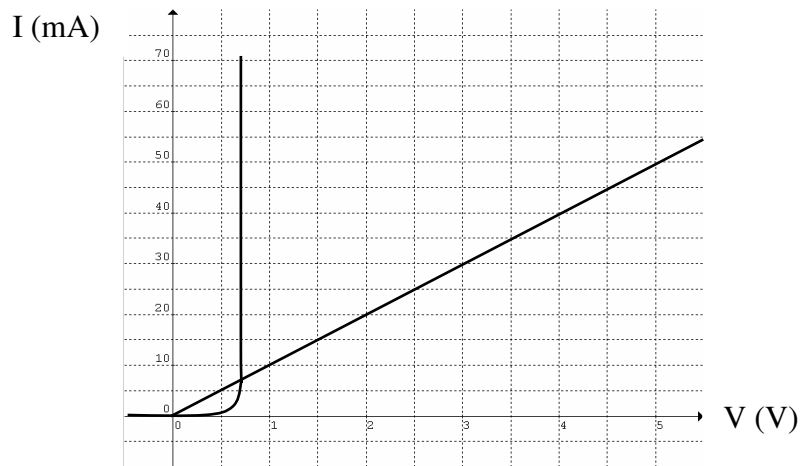
To centre the input signal at the linear operational region of the npn transistor, resistor  $R_2$  is replaced by another resistor  $R_3$ .

**Question 5** Find the value of the ratio  $\frac{R_1}{R_3}$ .

3 marks



The current-voltage characteristics of a diode and an ohmic resistor are shown together in the diagram below.



The diode and the ohmic resistor are connected in series with a voltage supply of 5.7 V DC. The switch-on voltage of the diode is 0.70 V.

**Question 6** Draw a circuit diagram showing the connection of the diode, the resistor and the voltage supply, with the diode in conducting mode.

2 marks

**Question 7** Determine the resistance of the ohmic conductor.

2 marks

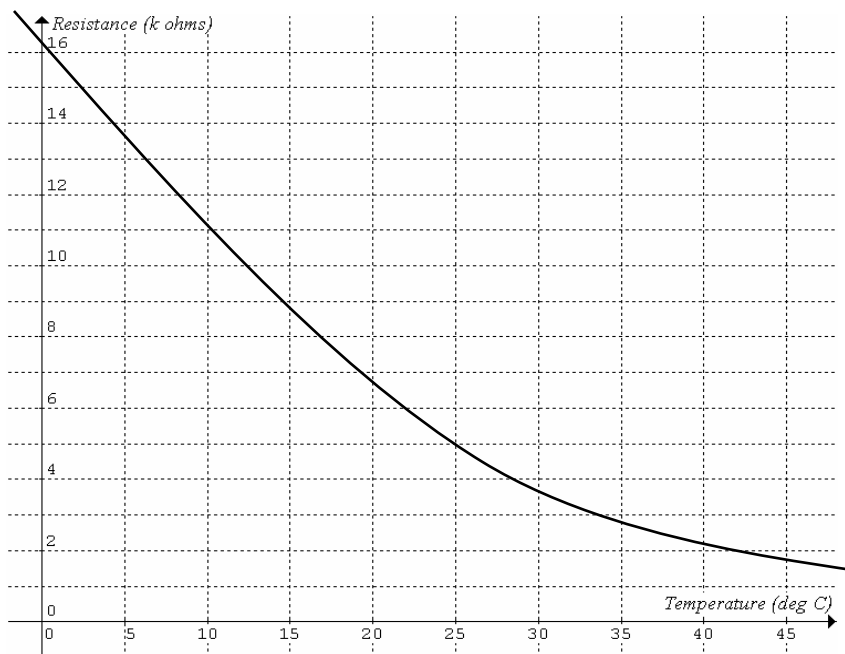
	$\Omega$
--	----------

**Question 8** Determine the current flowing in the diode.

2 marks

	mA
--	----

Tom Junior wants to make a thermometer to measure ambient temperature using a thermistor and a microammeter. It is to be powered by a 1.5V-battery. The resistance-temperature relationship of the thermistor is shown below.



**Question 9** Which one of the following circuits shows the correct wiring of the battery, thermistor and microammeter? 2 marks

- A.
- B.
- C.
- D.

**Question 10** What is the resistance of the thermistor when the thermistor is at 25°C? 1 mark

Tom Junior has to recalibrate the microammeter to give readings in °C.

**Question 11** Complete the following table.

3 marks

Current ( $\mu\text{A}$ )	Temperature ( $^{\circ}\text{C}$ )
	5
300	25
660	

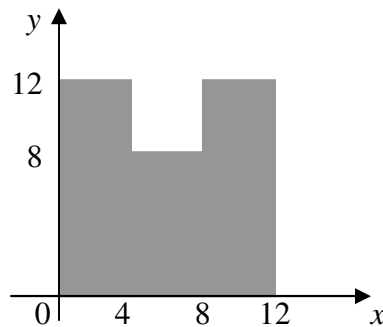
**Question 12** Compare the accuracy of the thermometer in measuring high and low ambient temperatures when self-heating of the thermistor is taken into consideration.

3 marks

### Detailed study 2 – Investigating materials and their use in structures

Write the letter(s) of your choice in each answer box.

Tom Junior cuts a piece of cardboard into a U-shape. The measurements (cm) and coordinate axes are shown in the following diagram.



**Question 1** The  $y$ -coordinate (cm) of the centre of mass of the shape is

A. 4.5

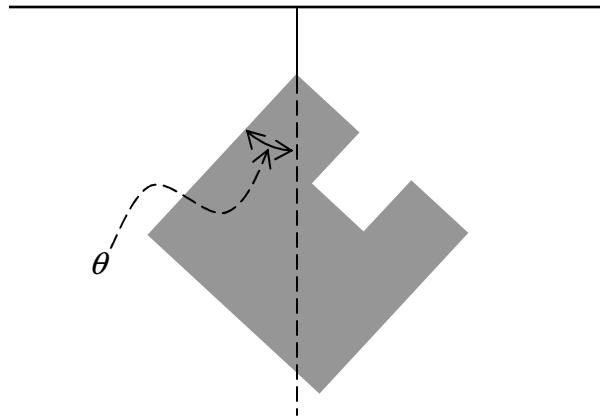
B. 5.5

C. 6.5

D. 7.5

2 marks

Tom Junior uses a cotton thread to hang the shape to the ceiling.

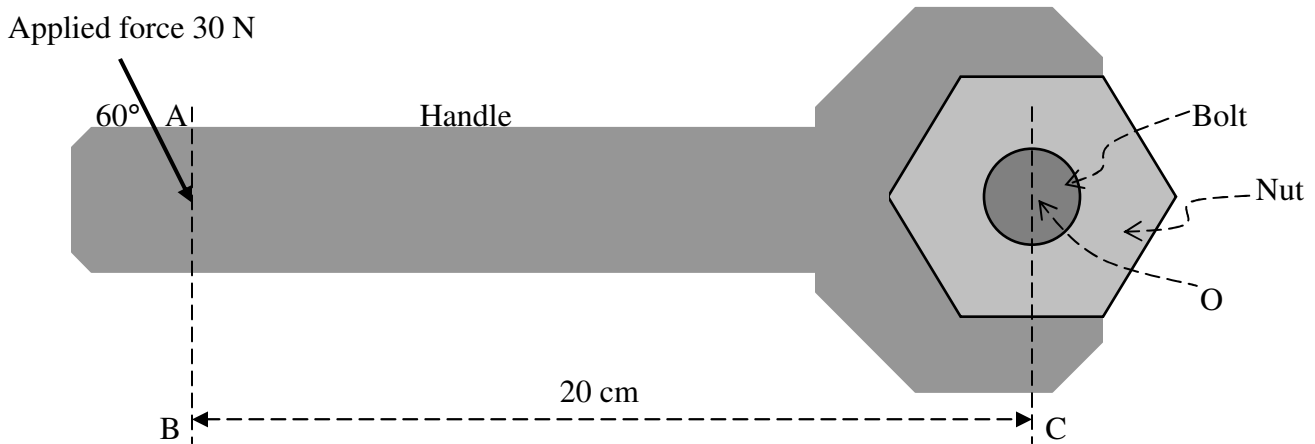


**Question 2** When the suspended shape is in equilibrium the angle  $\theta$  in degrees is closest to

- A. 41.0                                      B. 41.5                                      C. 42                                      D. 42.5

2 marks

Tom uses a spanner to shift a nut from a bolt that is fixed to a vertical wall. The nut starts to turn when he applies a force of 30 N at  $60^\circ$  to the handle and 20 cm from the centre of the bolt (see diagram below). The radius of the bolt is 0.80 cm



**Question 3** The axis of rotation of the spanner is

- A. parallel to AB      B. parallel to BC      C. perpendicular to the wall      D. at  $60^\circ$  to the handle

2 marks

**Question 4** The torque (in Nm) of the applied force about point O is

- A. greater than 6.0                      B. 6.0                      C. less than 6.0                      D. less than 3.0

2 marks

**Question 5** The maximum force of friction between the bolt and the nut is about

- A. 10 times the applied force  
B. 20 times the applied force  
C. 30 times the applied force  
D. 40 times the applied force

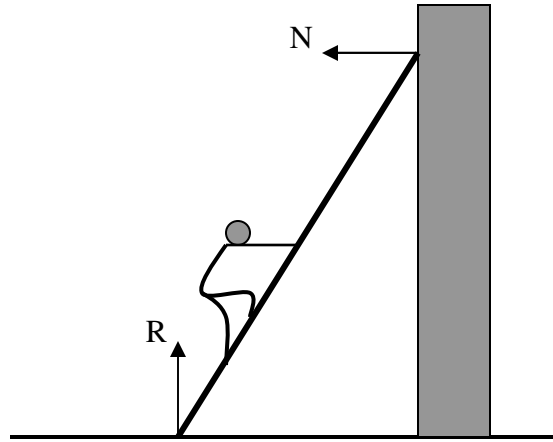
2 marks

**Question 6** While Tom is applying the force to the handle of the spanner the bolt is under

- A. tensile stress  
B. compressive stress  
C. shear stress  
D. compressive stress in its upper half and tensile stress in the lower half

2 marks

A 28-kg ladder of uniform density along its length is placed on a rough horizontal ground and lean against a rough vertical wall. Tom (72 kg) climbs up the ladder. Assuming the ladder is always in stable equilibrium.



**Question 7** As Tom climbs up the ladder the normal reaction  $N$  of the wall

- A. increases
- B. remains constant
- C. decreases
- D. is the only force on the top end of the ladder

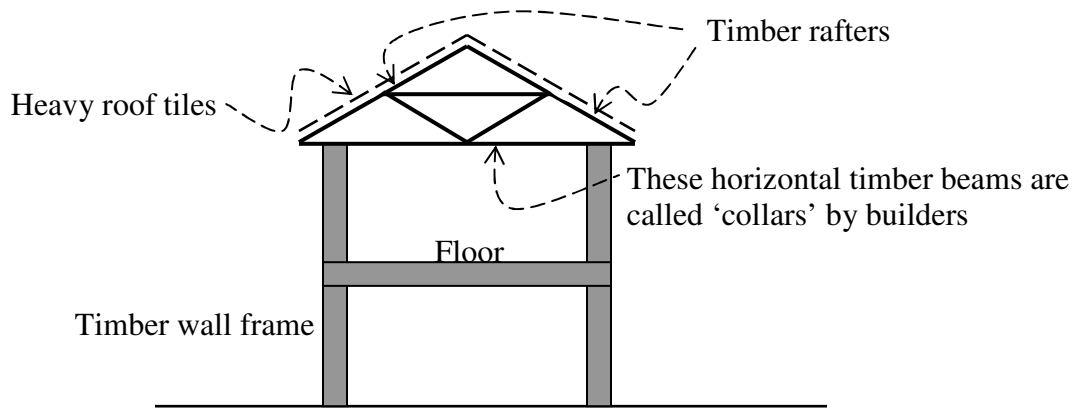
2 marks

**Question 8** The **best** possible range of values (in newtons) of the normal reaction  $R$  of the ground on the foot of the ladder is

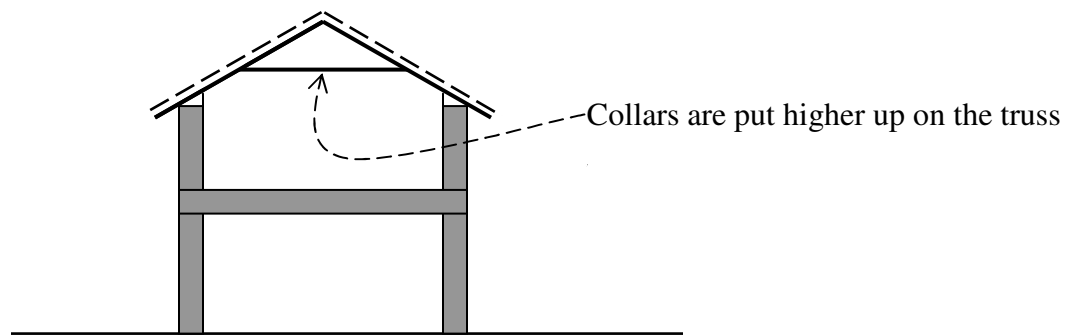
- A.  $200 < R < 800$
- B.  $0 \leq R \leq 1000$
- C.  $280 \leq R \leq 1000$
- D.  $350 < R < 950$

2 marks

The plan for building Tom's double-storey weatherboard (timber) house is shown below.



Tom suggests an alternative plan as shown below.



**Question 9** The effect(s) on the structure in raising the collars higher up is/are (one or more answers)

- A. increased compression in the collars
- B. increased bending of the rafters
- C. increased outward warping (deflection) of the side walls
- D. increased protrusion of the roof

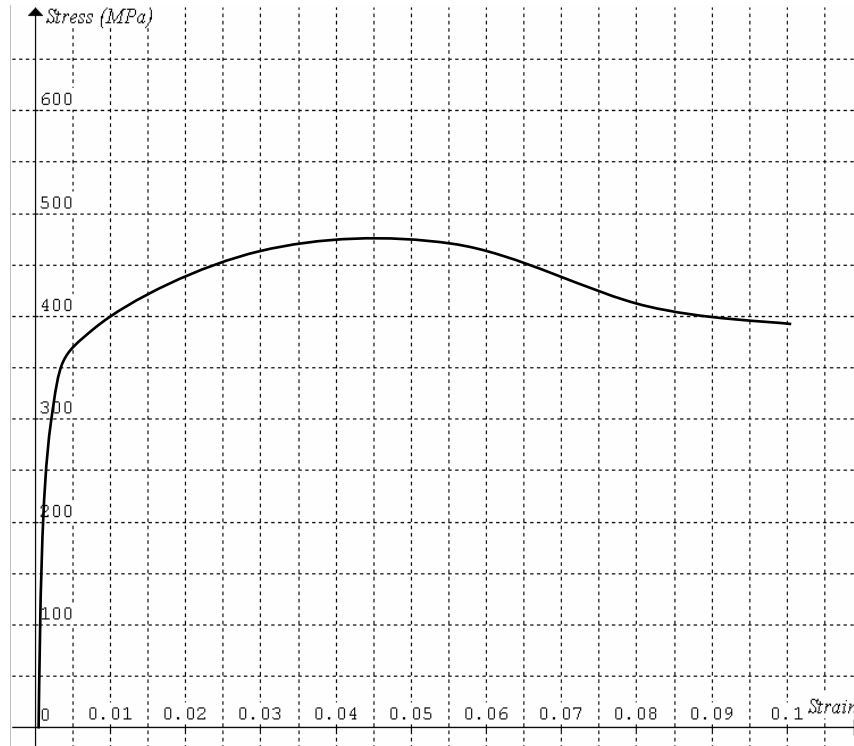
2 marks

**Question 10** The effect(s) on the structure in raising the collars higher up can be reduced significantly by a single modification to Tom's alternative plan (one or more answers), i.e.

- A. by changing the external timber walls to bricks, or
- B. by changing the timber roof rafters to steel, or
- C. by changing the heavy roof tiles to corrugated iron sheets, or
- D. by increasing the number of roof rafters

2 marks

The tensile stress-strain graph of a new ductile material prepared by Tom and Tom Junior is shown below. It fractures when  $\epsilon = 0.1$ .



**Question 11** The minimum stress required to break the material is

- A. 475 MPa                      B. 0.1                      C. 395 MPa                      D. 350 MPa approx

2 marks

**Question 12** The amount of energy (J) absorbed by each cubic metre of the material before it breaks is closest to

- A.  $4 \times 10^7$                       B.  $5 \times 10^7$                       C. 40                      D. 50

2 marks

**End of Trial Exam 1**